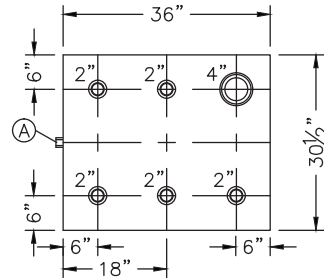
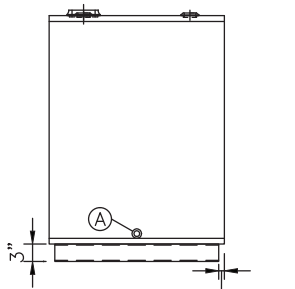


DETAIL A

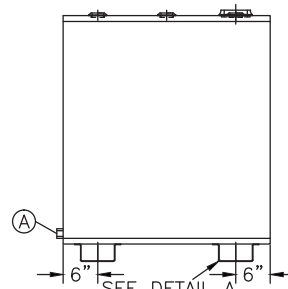


TOP VIEW



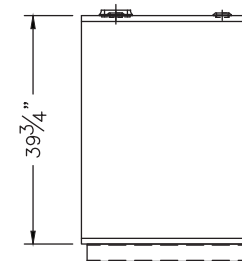
LEFT SIDE

1" (TYP)



FRONT VIEW

SEE DETAIL A



RIGHT SIDE

NOZZLE SCHEDULE

| ITEM | SIZE | RATING | TYPE | MATL | PROJ IN | PROJ OUT | REMARKS |
|------|------|--------|------|------|---------|----------|------------------------|
| A | 3/4" | N.P.T. | W.F. | C.S. | STD. | STD. | DRAIN |
| B | 2" | N.P.T. | W.F. | C.S. | STD. | STD. | |
| C | 4" | N.P.T. | W.F. | C.S. | STD. | STD. | EMERGENCY VENT OPENING |

NOTES:

- A. Quantity:
- B. Material: H.R. Carbon Steel
- C. Tank: 12 GA w/ 10 GA Top
- D. Design & Operating Pressure: Atmospheric.
- E. Design & Operating Temperature: Ambient.
- F. Tank to be Built & Labeled per U.L. Spec. #142.
- G. Tank to Bear Manufacturers & U.L. Labels Only.
- H. Tank to be Air Tested with Water & Soap Suds Solution.
- I. Interior: Remove Weld Slag (Ship Clean & Dry).
- J. Exterior: Painted in Blue Acrylic Enamel Paint.
- K. All Fittings to be Protected for Shipment.
- L. Customer has the Responsibility to Verify All Dimensions.

*All pages of this Schedule A are incorporated by reference and are a part of the additional terms of the Master Terms & Conditions of Sale.
www.newberrytanks.com/masterterms.pdf

APPROVAL FOR CONSTRUCTION
 SCHEDULE A - MASTER TERMS &
 CONDITIONS OF SALE*

- APPROVED AS DRAWN.
 - APPROVED WITH NOTED CHANGES, CONSTRUCTION WILL BE SCHEDULED WHEN SIGNED DRAWING AND CONFIRMED ORDER ARE RECEIVED.
- SIGNATURE _____
 DATE: _____

SALES ORDER #



860 Johnson Drive
 Delano, MN 55328
www.fluidall.com

VESSEL DESCRIPTION:

180 GALLON BULK SINGLE WALLED TANK

| | | | |
|-----------|--------|----------------|--------------|
| CUSTOMER: | | P.O.# | |
| DATE: | SCALE: | DWG.# SSWBT180 | DRAWN BY: TC |
| | | | CHKD. BY: TB |