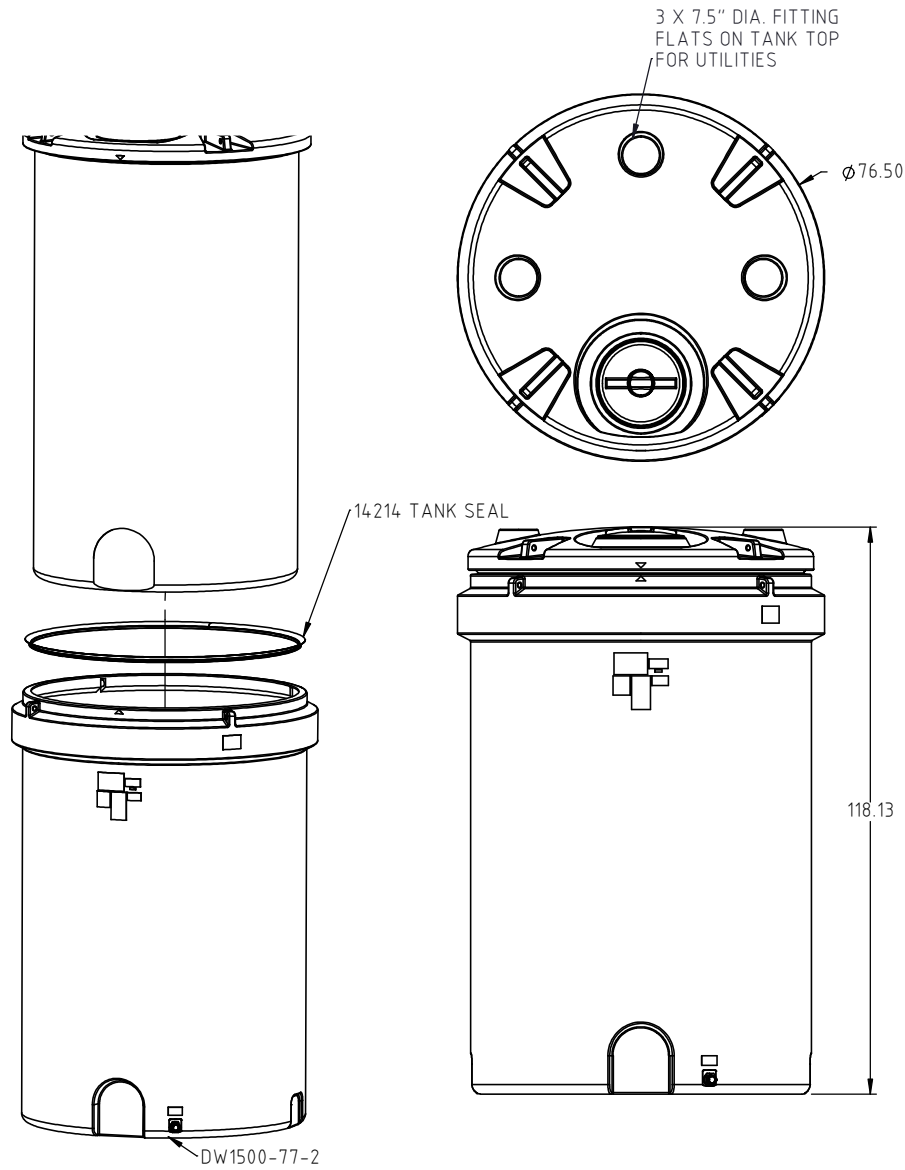


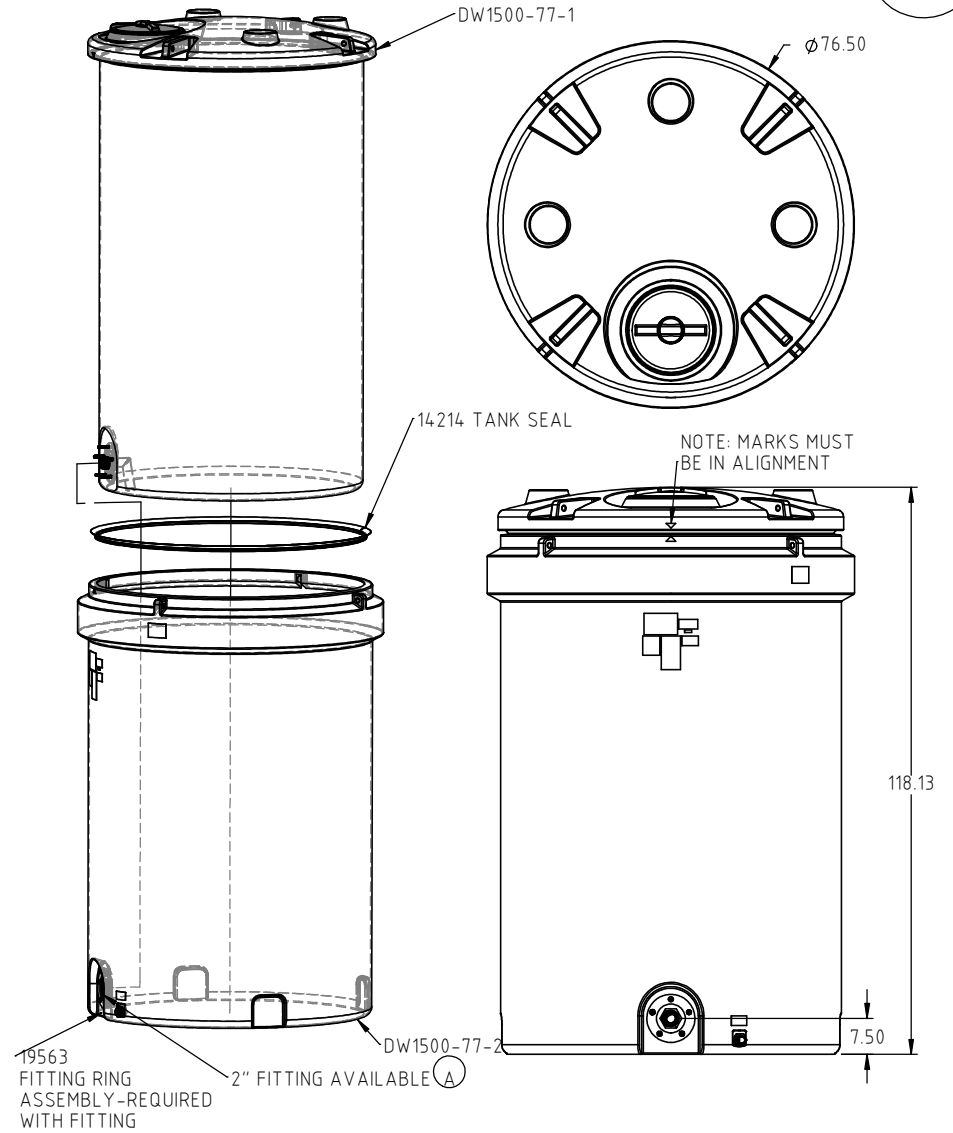
STANDARD TANK ASSEMBLY



TANK ASSEMBLY WITH OPTIONAL FITTING

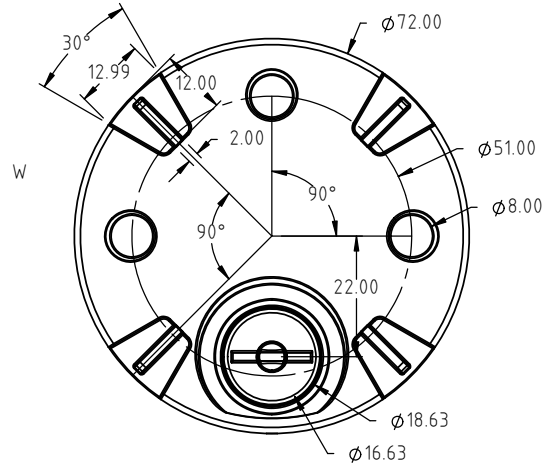
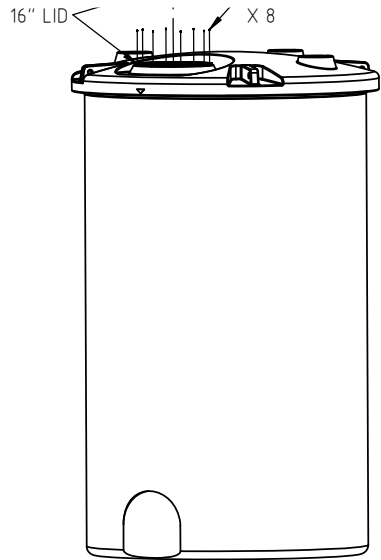
CDW1500A

A

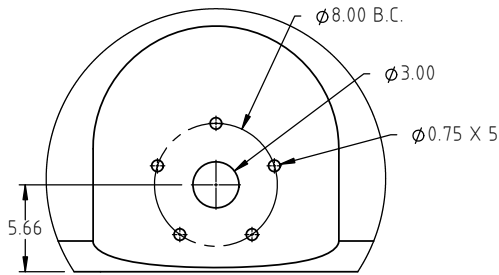


				DRAWN / DATE ADH 8/8/14	MATERIAL SEE NOTE 1.
A	FITTING LISTED ON PRINT STANDARDIZED.	ADH 10/15/15	3141	APPRD. / DATE REH 8/22/14	
REV	DESCRIPTION	BY / DATE	CCN		
ALL DIMENSIONS ARE IN DECIMAL INCHES TOLERANCES UNLESS OTHERWISE SPECIFIED		THIRD ANGLE PROJECTION ANSI 14.5M		SHOT WEIGHT:	NOTES:
POLYETHYLENE ±1% @ 68°F		METAL DECIMAL ± .125" FRACTION ± 1/4" ANGLE ± 1°		SHIPPING WEIGHT: STANDARD = 673 LBS.	1.) REFERENCE COMPONENT PRINTS FOR DETAILS
		FINISH:			2.) PATENT PENDING

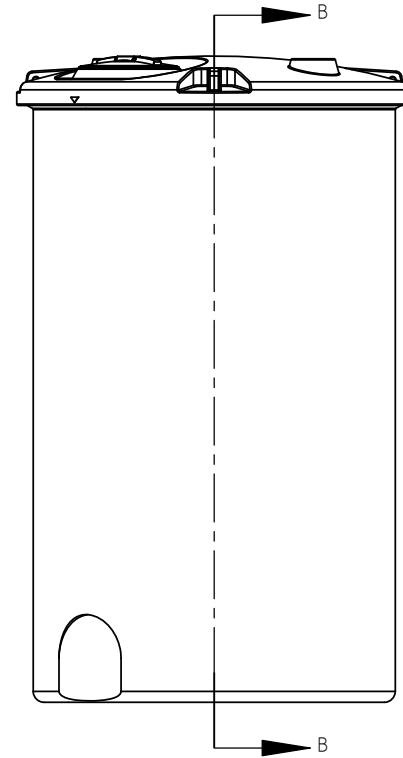
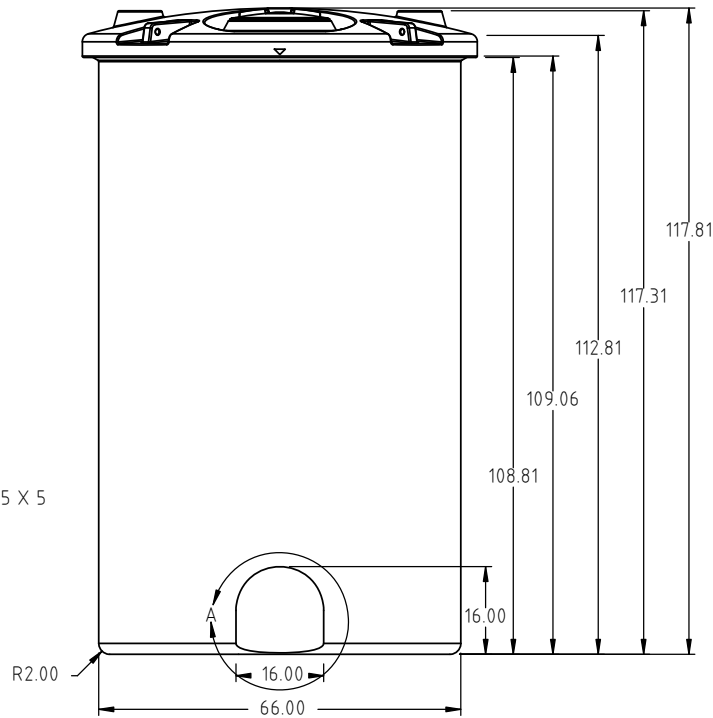
		860 Johnson Drive Delano, MN 55328 www.fluidall.com	
		DESCRIPTION 1500 GALLON DUAL LINE™ TANK ASSEMBLY	
SCALE N.S.	PART NO. CDW1500A		



FITTING OPTIONAL



DETAIL A
SCALE 2:25



SEE SHEET
2 OF 2 FOR
DETAILS

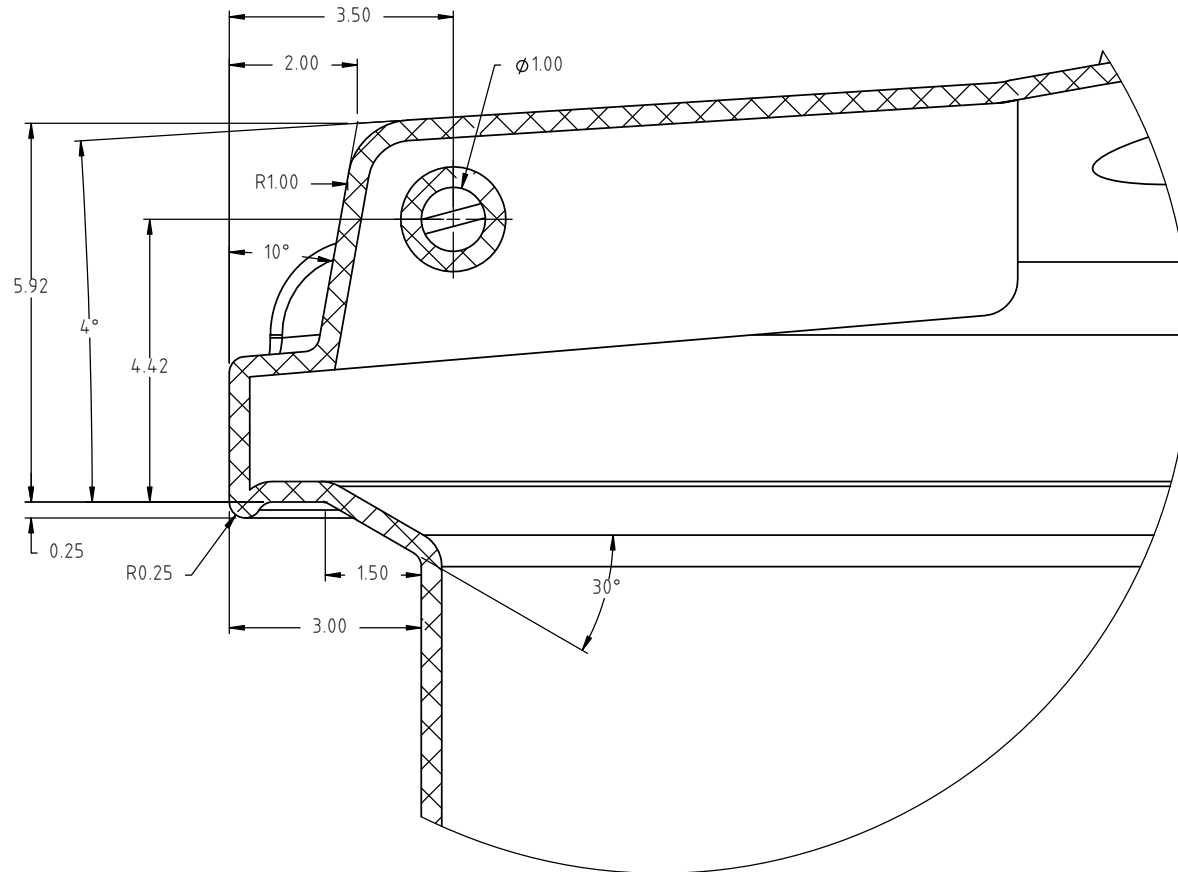
				DRAWN / DATE ADH 10/16/12	MATERIAL 10420
				APPRD. / DATE REH 8/22/14	
REV	DESCRIPTION	BY / DATE	CCN		
ALL DIMENSIONS ARE IN DECIMAL INCHES TOLERANCES UNLESS OTHERWISE SPECIFIED		THIRD ANGLE PROJECTION ANSI 14.5M		SHOT WEIGHT: 350 LBS.	NOTES: 1.) 0.32 NOM. WALL THICKNESS 2.) PATENT PENDING
POLYETHYLENE ±1% @ 68°F		METAL DECIMAL ± .125" FRACTION ± 1/4" ANGLE ± 1°		SHIPPING WEIGHT: 352 LBS.	
		FINISH:			



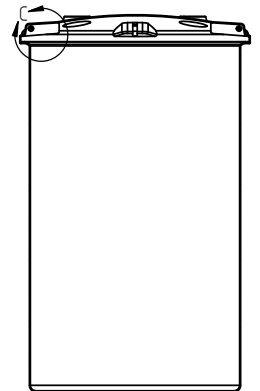
860 Johnson Drive
Delano, MN 55328
www.fluidall.com

DESCRIPTION 1500 GALLON DUAL LINE™ TANK-INNER TANK-1 OF 2	
SCALE N.S.	PART NO. CDW1500A

PRELIMINARY



DETAIL C
SCALE 1:3



SECTION D-D
SCALE 1:60

				DRAWN / DATE ADH 10/16/12	MATERIAL
				APPRD. / DATE XXXX	
REV	DESCRIPTION	BY / DATE	CCN		
ALL DIMENSIONS ARE IN DECIMAL INCHES TOLERANCES UNLESS OTHERWISE SPECIFIED		THIRD ANGLE PROJECTION ANSI 14.5M		SHOT WEIGHT:	NOTES: 1.) PATENT PENDING
POLYETHYLENE		METAL		SHIPPING WEIGHT:	
±1% @ 68°F		DECIMAL ± .125" FRACTION ± 1/4" ANGLE ± 1°		FINISH:	



860 Johnson Drive
Delano, MN 55328
www.fluidall.com

DESCRIPTION 1500 GALLON DUAL LINE™ TANK-INNER TANK- 2 OF 2	
SCALE N.S.	PART NO. CDW1500A

